



Health and Safety

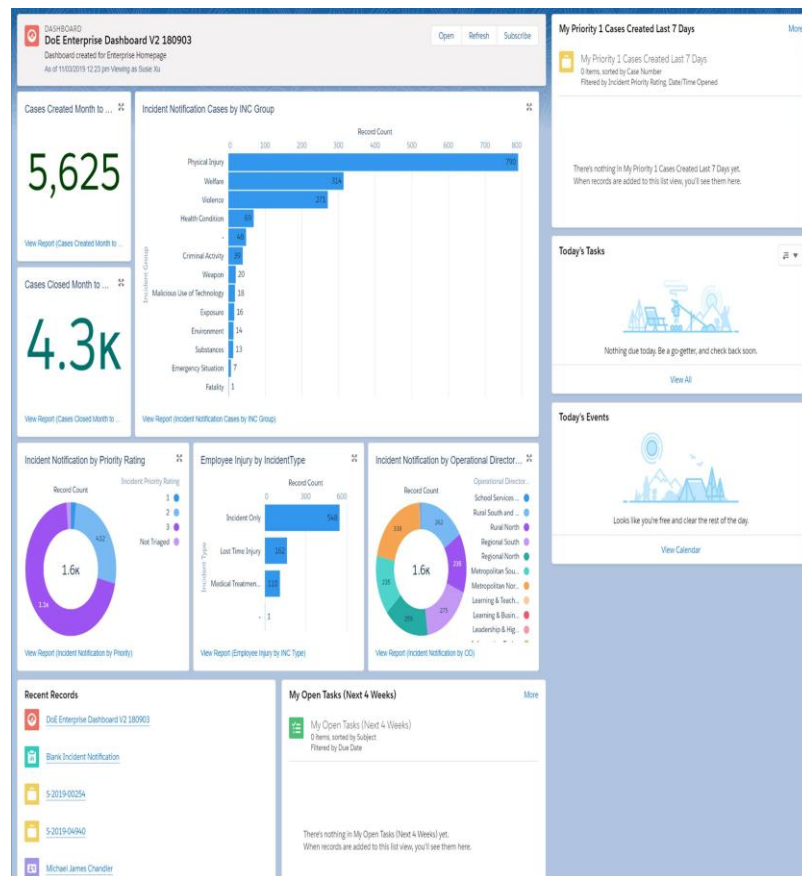
Jo Frearson, Manager Work Health & Safety

NSW PPA State Council

What's new? Shield System

New Incident and Case Management System

- New system now live
- Process for reporting an incident has not changed
- Improved information sharing across the department
- Single call and we share the information with Legal, Media etc
- All records maintained in the new system



What's new?

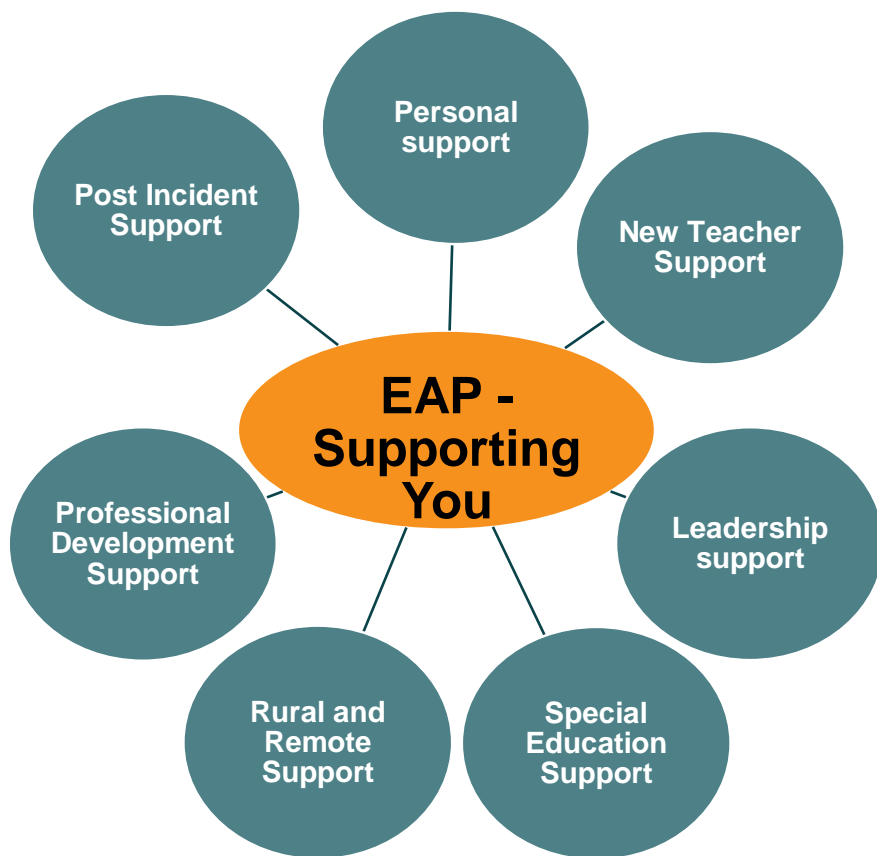
Incident Notification and Response



Updated Incident Notification and Response Policy and Procedure

- Updated to reflect recent changes to the Crimes Act
- Clear guidance on the types of incidents to report
- Support and guidance on how to respond to a traumatic or emergency incident or event
- Focus on incident support and Post Incident Support services
- Resource package to support implementation

What's New EAP – Supporting You



Service	Provider
Personal Support (inclusive of Online Support)	Converge
Leadership Support	Converge
New Teacher Support	Converge
Professional Development Support	Converge
Special Education Support	Converge, SMG, PeopleSense & Centacare
Post Incident Support	Converge, SMG, PeopleSense & Centacare
Rural and Remote Support	SMG, PeopleSense & Centacare

What's new?

Staff Wellbeing Framework



builds awareness to the services and resources available, promoting a shared responsibility.

1. Self-service intranet site hosting all wellbeing support and resources for staff working in education

The BelnWell Program connects staff across Education to programs, services and information in place to support the health and wellbeing of staff. The nine areas of the program direct staff to the most appropriate services for them based on their individual needs.

Not sure where to start? Access the BelnWell Self-Assessment survey and gain recommendations on the most relevant support for you.

Access information and resources to help you stay InShape such as tips for maintaining a healthy diet and lifestyle.

Access programs and services so you can invest in staying InShape such as the department's Fitness Passport program.

Access immediate InTense support to help you to recover from an injury or illness such as through the department's Recovery at Work program.

Access information and resources to help you stay InInvolved such as completing the department's HR Induction Program

Access programs and services so you can invest in staying InInvolved such as taking part in professional development activities in the workplace

Access immediate InTense support and advice to support your wellbeing such as through post incident support services following a work-related traumatic incident.

Access information and resources to help you stay InControl of your wellbeing such as information on respectful workplaces.

Access programs and services so you can invest in staying InControl of your wellbeing such as access to support and advice through the NSW Domestic Violence Helpline.

Access immediate InTense support and advice to resolve any challenges and support your health and wellbeing such as utilising the department's Personal Support EAP counselling service.

InShape

InInvolved

InControl

InFormed

InVest

InTense

What's new?

Staff Wellbeing Framework



Staff Wellbeing Framework

1. Self-service intranet site hosting all wellbeing support and resources for staff working in education

2. BeInWell self-assessment survey to direct staff and provide recommendations on the wellbeing supports relevant to them

3. BeInWell workplace survey to provide an indication of the workplace environment and the wellbeing support or programs for consideration based on staff interests

Promoting the full range of programs, information and services to support staff wellbeing

Our new way of training



Incident Management Exercise (IMEX)

IMEX equips staff to respond to and manage serious incidents and emergencies in schools, to maintain a safe working and learning environment for students and staff.

Tailored training to help schools manage and respond to serious incidents

Overview

IMEX is an engaging simulation experience tailored to local school environments. Simulations are based on recent school events to help participants put policy into practice. Exercises involve group work to explore situations as they unfold, enabling participants to apply the knowledge and skills required in the case of an incident.

Target Audience

- Principals and school executive
- Frontline administrative staff
- Aspiring school leaders
- Members of school's Emergency Planning Committee
- Health and Safety committee members
- Health and Safety Representatives

Facilitators

Chris Marlow and John Allen are education, incident and emergency management experts, and former Police Inspectors.

Benefits

- Schools will be better prepared to manage and contain serious incidents
- Learn how a local environment can impact on managing serious incidents
- Collaborate, reflect upon decisions and learn from others' experiences
- Practice your incident response, knowledge and systems in a simulated environment
- Test your school's Emergency Management Plan



Duration 3 hours, and includes light refreshments.

Cost \$75 ex GST per participant. Refer to [cancellation policy](#) if required.

Training dates Refer to the [Face to Face Training Calendar](#) for dates and locations.

Attendance Between 15 and 30 participants. IMEX can be delivered at the request of individual schools or through a regional calendar to service multiple schools.

Further information

- Phone the Incident Report and Support Hotline on 1800 811 523 (option 4)
- Email health.safetyprograms@det.nsw.edu.au
- Visit the [Health and Safety](#) page on the intranet.



Completing this course will contribute 3 hours of NESA Registered PD addressing maintaining student safety, complying with legislative, administrative and organisational requirements from the Australian Professional Standards for Teachers towards maintaining Proficient Teacher Accreditation.

ENROL NOW

Visit the [Face to Face Training Calendar](#), email health.safetyprograms@det.nsw.edu.au, OR phone the Incident Report and Support Hotline on 1800 811 523 (option 4).



Emergency Planning and Response Workshops

Workshops to help schools to plan and prepare, and to respond and recover in the case of an emergency, and walk away with an updated Emergency Management Plan for your school.

Build capability in planning and responding to incidents and emergencies

Overview

Emergency Planning and Response Workshops are practical sessions where participants work with emergency response experts and colleagues from other local schools.

Participants will work through school based scenarios, tailored to their local school's risks, and develop practical strategies to implement into their local Emergency Management Plans.

Facilitators

Chris Marlow and John Allen are education, incident and emergency management experts, and former Police Inspectors.

Benefits

- Facilitated process to support you in updating your Emergency Management Plan
- Collaborate with other educators on their experiences in planning and responding to emergencies
- Share the benefit of your experience with other schools
- Obtain best practice advice from experts in the field of emergency planning and response
- Ensure schools have the best plan in the event of an emergency

Target Audience

- Principals and school executive
- Workplace managers
- Business managers
- Aspiring school leaders
- Members of school's Emergency Planning Committee
- Health and Safety committee members
- Health and Safety Representatives

Plan

Prepare

Respond

Recover

Duration Full day workshop, including lunch and light refreshments.

Cost \$150 ex GST per participant. Refer to [cancellation policy](#) if required.

Training dates Refer to the [Face to Face Training Calendar](#) for dates and locations.

Attendance Between 15 and 30 participants. Workshops can be delivered at the request of individual schools or through a regional calendar to service multiple schools.

Further information

- Phone the Incident Report and Support Hotline on 1800 811 523 (option 4)
- Email health.safetyprograms@det.nsw.edu.au
- Visit the [Health and Safety](#) page on the intranet.



Completing this course will contribute 6 hours of NESA Registered PD addressing maintaining student safety, complying with legislative, administrative and organisational requirements from the Australian Professional Standards for Teachers towards maintaining Proficient Teacher Accreditation.

ENROL NOW

Visit the [Face to Face Training Calendar](#), email health.safetyprograms@det.nsw.edu.au, OR phone the Incident Report and Support Hotline on 1800 811 523 (option 4).



STRETCH Manual Handling Training Courses

STRETCH Manual Handling is an innovative program offering specific training to staff working in schools for specific purposes, support units or staff engaged in farm or general assistant duties.

TWO NEW COURSES AVAILABLE

Overview

A practical workshop tailored to the school environment, helps participants understand how to safely move their body when performing tasks specific to their role.

There are two courses available:

- A course designed for schools for specific purposes, and schools with support units
- A course designed for schools with Farm and/or General Assistants

Benefits

- Perform safe movements during work tasks specific to the participants role
- Injury prevention advice and strategies
- Reduced risk of personal injury
- Personal hints and tips to manage personal health and wellbeing

Target Audience

- Schools for specific purposes and schools with support units
- School learning and support officers
- Teaching staff, including support unit teachers
- Schools with Farm and/or General Assistants
- Farm and General Assistants

Facilitators

Allied Health Professionals, including occupational therapists, physiotherapists and exercise physiologists with experience in working in the department's school environments.

S SAFE MOVES FOR EVERYONE

T THINK ABOUT THE TASK

R RETRAIN YOUR MIND

E EXAMINE YOUR ENVIRONMENT AND USE EQUIPMENT WHERE APPROPRIATE

T TALK TO YOUR COLLEAGUES

C CARE ABOUT YOURSELF

H HEALTHIER WORKPLACE FOR EVERYONE



Duration 2.5 hours, and includes light refreshments.

Cost \$75 ex GST per participant. Refer to [cancellation policy](#) if required.

Attendance 15 - 20 participants. Courses can be delivered at the request of individual schools or through a regional calendar to service multiple schools.

Further information

- Phone the Incident Report and Support Hotline on 1800 811 523 (option 4)
- Email health.safetyprograms@det.nsw.edu.au
- Visit the [Health and Safety](#) page on the intranet.

Completing this course will contribute 2.5 hours of Non-Registered PD which can be used as Teacher Identified Professional Development for teachers maintaining accreditation.

ENROL NOW

Complete a request for training form, email health.safetyprograms@det.nsw.edu.au, or phone the Incident Report and Support Hotline on 1800 811 523 (option 4).

Visit our [Training Calendar](#)

What else are we working on?



- A simplified risk management framework
- An updated student health package, including:
 - Administration of prescribed medications
 - Asthma reliever medications for schools
- Recovery at Work Service Model - Pilot
- Get Healthy at Work pilot program
- New Corporate Safety Strategy