



Respectful Relationships Education Program

Expressing interest for 2026 implementation

Respectful Relationships Education

Renee West, Leader, Curriculum Initiatives K-12

15 August 2025





Acknowledgement of Country

We recognise the Ongoing Custodians of the lands and waterways where we work and live. We pay respect to Elders past and present as ongoing teachers of knowledge, songlines and stories. We strive to ensure every Aboriginal and Torres Strait Islander learner in NSW achieves their potential through education.

‘The Land Heals Us’ created by Sarah Whitfield from Winmalee High School as part of the 2016 Schools Reconciliation Challenge.

RRE program background

Consent and Respectful Relationships Education (CRRE)

The Consent and Respectful Relationships Education (CRRE) measure supports the wellbeing of Australian primary and secondary school students and school communities through supporting investment in expert-developed, high-quality, evidence-based and age-appropriate consent and respectful relationships education (RRE).

\$230 million to improve NSW domestic violence prevention and support

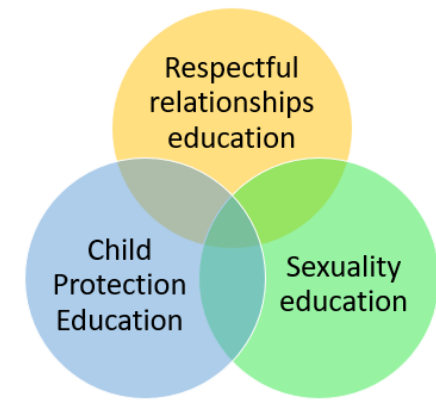
Published: 6 May 2024

Released by: The Premier, Attorney General, Minister for Corrections, Minister for the Prevention of Domestic Violence and Sexual Assault



Respectful Relationships Education in NSW schools

What do students learn?



Respectful Relationships Education (RRE) involves developing students' attitudes and understanding of ethical, equal and non-violent relationships and skills to protect themselves and others as they challenge the abuse of power and advocate for a commitment to equity, inclusion, respect and responsibility.

Issues addressed within school based RRE in NSW include:

- consent
 - sexual violence
 - nudes, sexting/ sextortion
 - coercion/ grooming
 - pornography
 - child protection education (power, abuse, coercion, personal safety, rights and responsibilities, violence)
 - domestic and family violence
 - prosocial behaviour and extremism
 - bullying, discrimination, vilification.
-



Plan for
public
education

DFSV
Strategy

CRRE
measure

School
excellence

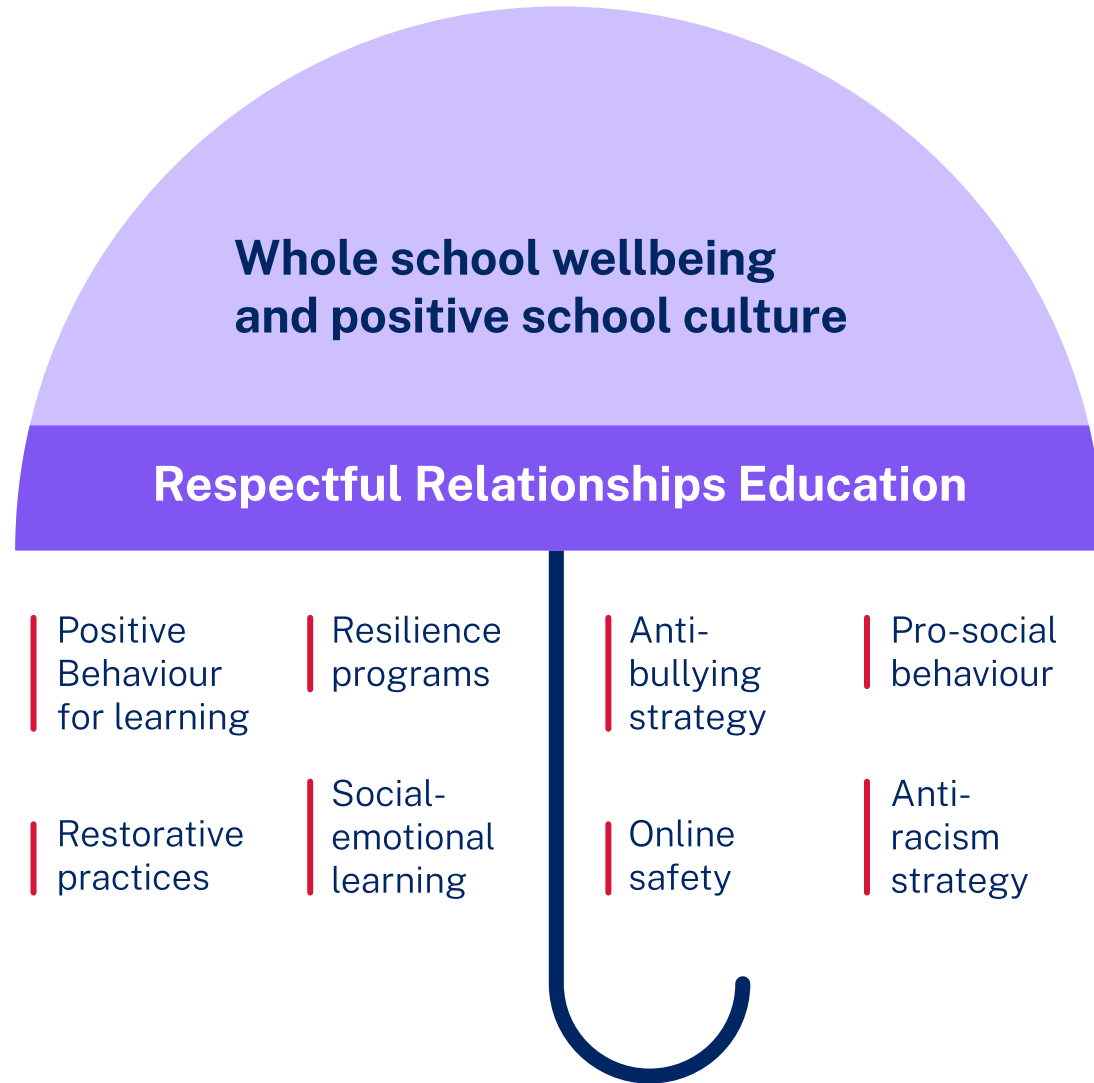
Curriculum

Student and
staff
wellbeing

Behaviour &
engagement

Equal and respectful relationships

Guiding practice - partnerships



Partnerships

- DCJ, OurWatch
- Student behaviour and Student participation
- Child Wellbeing/ Child Protection
- Aboriginal Education Advisors
- Effective Teaching Practice
- Developmental Evaluation/ Data and Analytics
- Multimedia Resource Development
- Disability and support
- Trauma informed practice
- Cybersecurity
- Child Wellbeing and Mental Health Services
- Anti Racism Education/ Multicultural Education/ EALD
- Student Wellbeing Support/ TAaS
- People Group
- PHSB team/ Field Officers
- Comms & Engagement – DOVES, ACYP, Brand
- Primary and secondary curriculum

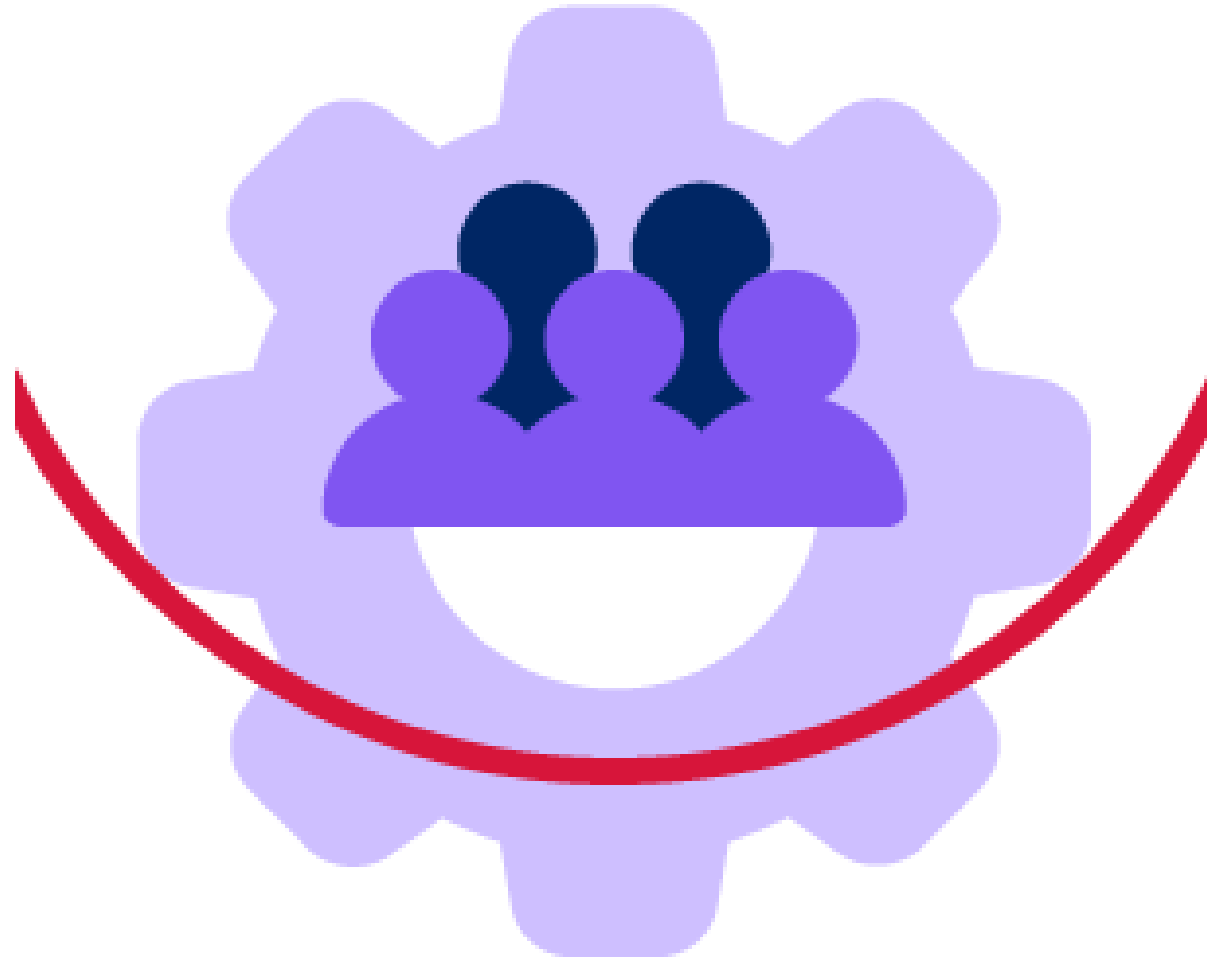
2026/2027 school implementation

Respectful Relationships Education

Schools are now invited to [express interest](#) in being part of the RRE program for 2026, 2027 and 2028.

Schools will be funded and have access to:

- support for planning and implementation
- professional learning for leaders, whole school staff and curriculum
- tools and resources for self assessment and curriculum delivery
- RRE evaluation at the school and system level
- cluster based support by the RRE specialised staff and mentoring by other schools.



Guiding practice

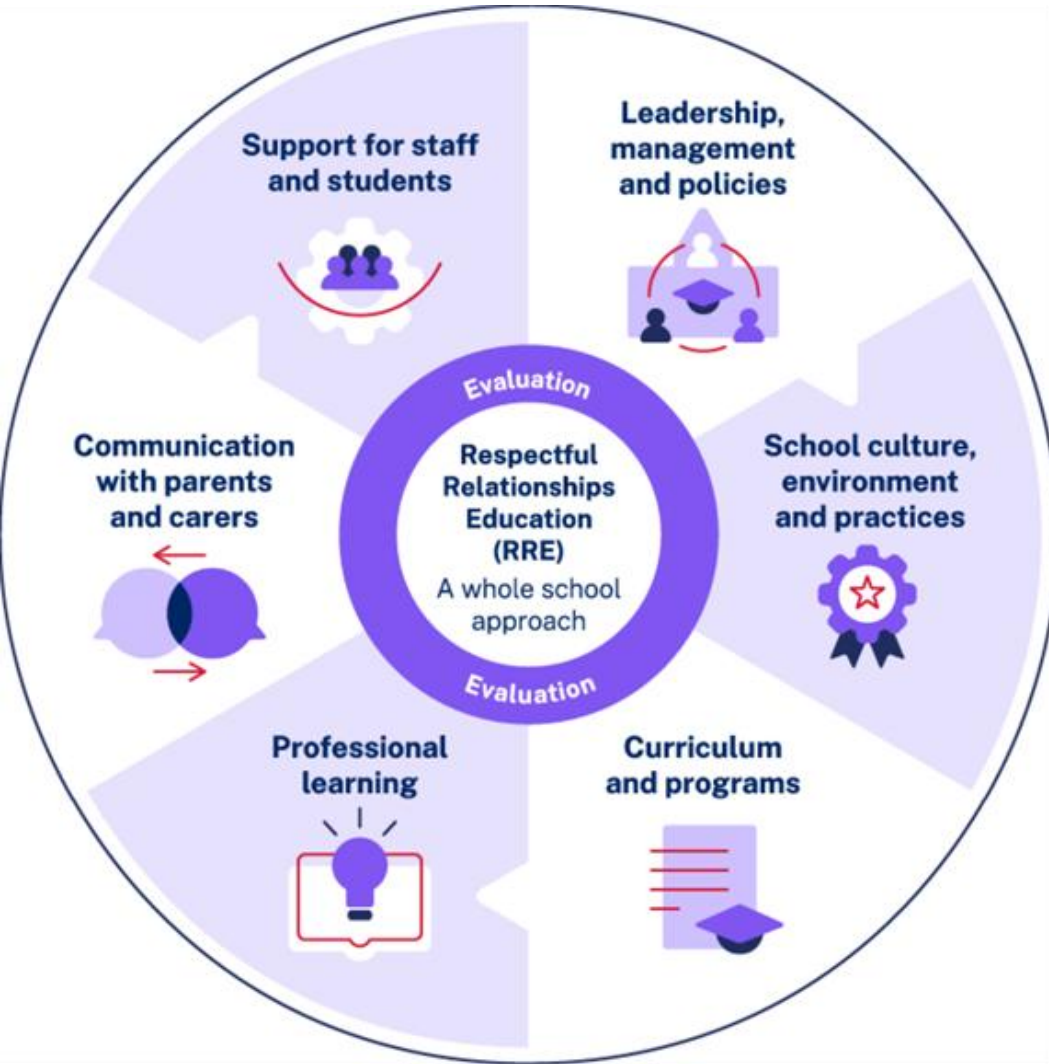


Figure: Components of a whole school approach (program components)

A whole school approach to Respectful Relationships Education is made up of six components.

These can also be viewed as priority areas.

Schools can work across any of these components.

Questions



Copyright



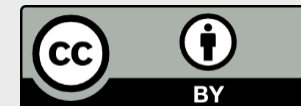
© State of New South Wales (Department of Education), 2025

The copyright material published in this resource is subject to the *Copyright Act 1968* (Cth) and is owned by the NSW Department of Education or, where indicated, by a party other than the NSW Department of Education (third-party material).

Copyright material available in this resource and owned by the NSW Department of Education is licensed under a [Creative Commons Attribution 4.0 International \(CC BY 4.0\) license](#).

This license allows you to share and adapt the material for any purpose, even commercially.

Attribution should be given to © State of New South Wales (Department of Education), 2025.



Material in this resource not available under a Creative Commons license:

- the NSW Department of Education logo, other logos and trademark-protected material
- Material owned by a third party that has been reproduced with permission. You will need to obtain permission from the third party to reuse its material.

Links to third-party material and websites

Please note that the provided (reading/viewing material/list/links/texts) are a suggestion only and implies no endorsement, by the New South Wales Department of Education, of any author, publisher, or book title. School principals and teachers are best placed to assess the suitability of resources that would complement the curriculum and reflect the needs and interests of their students.

If you use the links provided in this document to access a third-party's website, you acknowledge that the terms of use, including licence terms set out on the third-party's website apply to the use which may be made of the materials on that third-party website or where permitted by the *Copyright Act 1968* (Cth). The department accepts no responsibility for content on third-party websites.